

I, MICHAEL STEPHEN SMITH, MIPENZ CPENG HEREBY BELIEVE ON ALL REASONABLE GROUNDS THAT THE LOCATIONS OF KERBS, CHANNELS, STREET LIGHTS AND FOOTPATHS ARE ACCURATELY PLOTTED IN RELATION TO BOUNDARIES AND IS CORRECT AS THIS INFORMATION HAS BEEN PROVIDED BY THE CONTRACTOR OF THE WORKS – KERRY DINES LTD.

 MICHAEL STEPHEN SMITH DATE
 MIPENZ CPENG

- NOTES**
- ALL COORDINATES ARE IN METRES AND IN TERMS OF GEODETIC 2000 MT. EDEN
 - ALL LEVELS ARE IN METRES AND IN TERMS OF THE LANDS AND SURVEY DATUM (MEAN SEA LEVEL) AUCKLAND 1946

LEGEND

	STD. KERB		EDGE OF SEAL
	KERB & NIB		TRANSITION TO EXISTING
	MOUNTABLE KERB		STREET LIGHTS
	CHANNEL		DRIVEWAY
	FOOTPATH		
	CHIPSEAL ONLY		

	mN	mE	
SL88	758940.00	421205.43	TYPE A
SL89	758896.65	421197.99	TYPE A
SL90	758852.89	421235.98	TYPE A
SL91	758819.15	421284.37	TYPE A
SL92	758789.37	421321.65	TYPE A
SL93	758752.6	421327.81	TYPE A
SL94	758804.72	421341.28	TYPE A
SL95	758784.39	421399.75	TYPE A
SL96	758811.68	421412.17	TYPE A
SL97	758861.61	421384.9	TYPE A
SL98	758757.49	421450.33	TYPE A
SL99	758780.51	421456.34	TYPE A
SL100	758747.28	421506.73	TYPE A

STREET LIGHT DETAILS
 TYPE A – 7.5m VICPOLE 125mm SQUARE SERIES COLUMN HOT DIPPED GALV, TWO PACT BLACK PAINT FINISH. CREE EDGE SQUARE SERIES XAL 1304C-UT LED LIGHT FIXTURE. 40 WATT LED (525MA DRIVER), TYPE 3M OPTICS

REV	ISSUED FOR	RJP	DATE
A	ISSUED FOR 224C	RJP	11-20

DATE	BY
11-20	RJP
11-20	MSS

THIS DRAWING AND DESIGN REMAINS THE PROPERTY OF, AND MAY NOT BE REPRODUCED OR ALTERED, WITHOUT THE WRITTEN PERMISSION OF CIVILPLAN CONSULTANTS LIMITED. NO LIABILITY SHALL BE ACCEPTED FOR UNAUTHORISED USE OF THIS DRAWING.

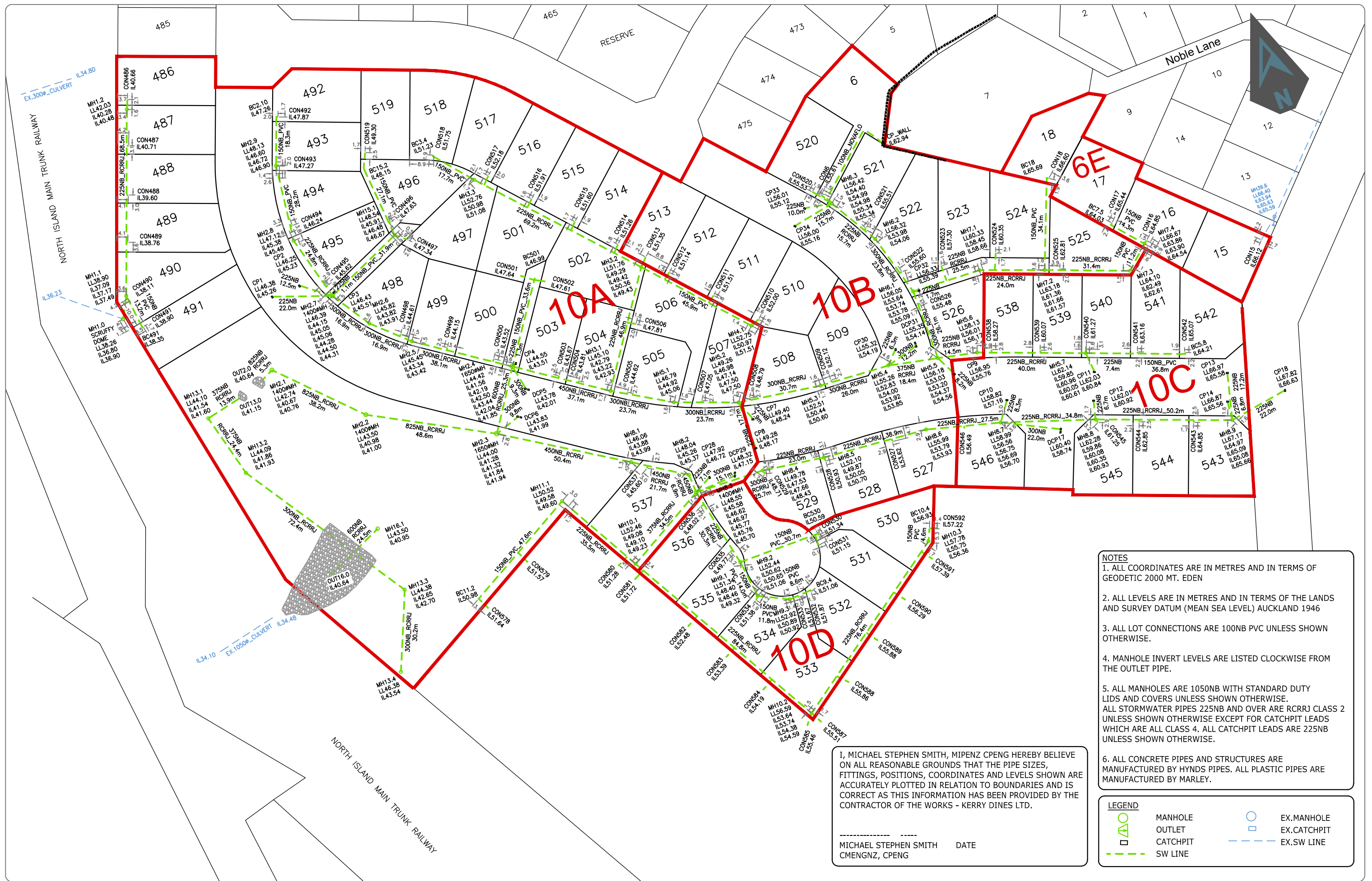
CIVILPLAN
CONSULTANTS
 Level 9, Laidlaw House, 20 Amersham Way, Manukau, Auckland. Phone: 09 222 2445

PROJECT TITLE:
**DFH JOINT VENTURE
 HITCHEN STAGES 6E, 10A,10B,10C,10D
 POKENO**

SHEET TITLE:
ROADING AS BUILT

ISSUE STATUS: **AS BUILT**
 SCALE: (A1/A3) **1:1250 A3**
 SCALE BAR
 DRAWING NUMBER: **136701-10-AB300** REV: **A**

Filepath: P:\APPPDATA\LOCAL\AUTODESK\CAD 2020\ENU\TEMPLATE C:\DATA\POKENO\HITCHEN\STAGE 10\AS BUILTS\136701-10-AB300.DWG



- NOTES**
1. ALL COORDINATES ARE IN METRES AND IN TERMS OF GEODETIC 2000 MT. EDEN
 2. ALL LEVELS ARE IN METRES AND IN TERMS OF THE LANDS AND SURVEY DATUM (MEAN SEA LEVEL) AUCKLAND 1946
 3. ALL LOT CONNECTIONS ARE 100NB PVC UNLESS SHOWN OTHERWISE.
 4. MANHOLE INVERT LEVELS ARE LISTED CLOCKWISE FROM THE OUTLET PIPE.
 5. ALL MANHOLES ARE 1050NB WITH STANDARD DUTY LIDS AND COVERS UNLESS SHOWN OTHERWISE. ALL STORMWATER PIPES 225NB AND OVER ARE RCRRJ CLASS 2 UNLESS SHOWN OTHERWISE EXCEPT FOR CATCHPIT LEADS WHICH ARE ALL CLASS 4. ALL CATCHPIT LEADS ARE 225NB UNLESS SHOWN OTHERWISE.
 6. ALL CONCRETE PIPES AND STRUCTURES ARE MANUFACTURED BY HYNDS PIPES. ALL PLASTIC PIPES ARE MANUFACTURED BY MARLEY.

I, MICHAEL STEPHEN SMITH, MIPENZ CPENG HEREBY BELIEVE ON ALL REASONABLE GROUNDS THAT THE PIPE SIZES, FITTINGS, POSITIONS, COORDINATES AND LEVELS SHOWN ARE ACCURATELY PLOTTED IN RELATION TO BOUNDARIES AND IS CORRECT AS THIS INFORMATION HAS BEEN PROVIDED BY THE CONTRACTOR OF THE WORKS - KERRY DINES LTD.

 MICHAEL STEPHEN SMITH DATE
 CMENGNZ, CPENG

LEGEND

	MANHOLE		EX. MANHOLE
	OUTLET		EX. CATCHPIT
	CATCHPIT		EX. SW LINE
	SW LINE		

ISSUED FOR 224C	RJP	11-20
REVISION DETAILS	BY	DATE

PLOTTED:	DATE:	THIS DRAWING AND DESIGN REMAINS THE PROPERTY OF, AND MAY NOT BE REPRODUCED OR ALTERED, WITHOUT THE WRITTEN PERMISSION OF CIVILPLAN CONSULTANTS LIMITED. NO LIABILITY SHALL BE ACCEPTED FOR UNAUTHORISED USE OF THIS DRAWING.
RJP	11-20	
DRAWN:	DATE:	
RJP	11-20	
APPROVED:	DATE:	
MSS	11-20	

CIVILPLAN CONSULTANTS

Level 9, Laidlaw House, 20 Amersham Way, Manukau, Auckland. Phone: 09 222 2445

PROJECT TITLE:
**DFH JOINT VENTURE
 HITCHEN STAGES 6E, 10A, 10B, 10C, 10D
 POKENO**

SHEET TITLE:
STORMWATER AS BUILT

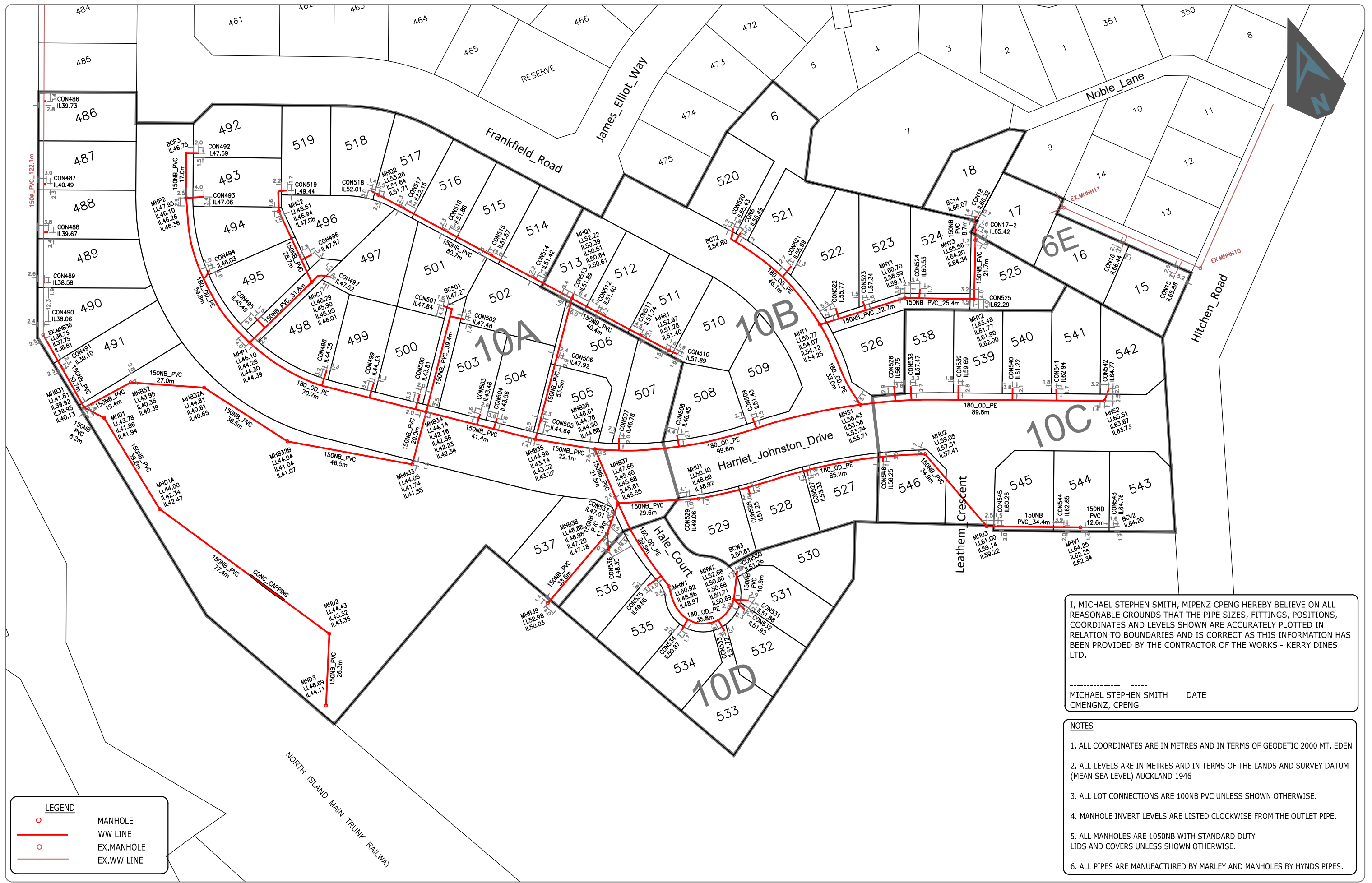
ISSUE STATUS: **AS BUILT**

SCALE: (A1/A3) **1:1250 A3**

SCALE BAR

DRAWING NUMBER: **136701-10-AB400** REV: **A**

Filepath: P:\APPPDATA\LOCAL\AUTODESK\C3D 2020\ENU\TEMPLATE C:\DATA\POKENO\HITCHEN\STAGE 10 AS BUILT\136701-10-AB400.DWG



ISSUED FOR 224C	RJP	11-20
REVISION DETAILS	BY	DATE

PLOTTED:	DATE:	THIS DRAWING AND DESIGN REMAINS THE PROPERTY OF, AND MAY NOT BE REPRODUCED OR ALTERED, WITHOUT THE WRITTEN PERMISSION OF CIVILPLAN CONSULTANTS LIMITED. NO LIABILITY SHALL BE ACCEPTED FOR UNAUTHORISED USE OF THIS DRAWING.
RJP	11-20	
DRAWN:	DATE:	
RJP	11-20	
APPROVED:	DATE:	
MSS	11-20	

CIVILPLAN CONSULTANTS

Level 9, Laidlaw House, 20 Amersham Way, Manukau, Auckland. Phone: 09 222 2445

PROJECT TITLE:
**DFH JOINT VENTURE
 HITCHEN STAGES 6E, 10A, 10B, 10C, 10D
 POKENO**

SHEET TITLE:
WASTEWATER AS BUILT

ISSUE STATUS: **AS BUILT**

SCALE: (A1/A3) **1:1250 A3**

SCALE BAR
 N.T.S.

DRAWING NUMBER: **136701-10-AB401** REV: **A**